

ARIZONA WATERCOLOR ASSOCIATION

NEWS



PO BOX 5406, SUN CITY WEST, ARIZONA 85375 • Web Site: www.watercolor.org • e-mail: AWA@watercolor.org

Member's Critique Bring One Painting

The Member's Critique, an AWA favorite, will be the program at our March 13th meeting. All AWA members are invited to bring

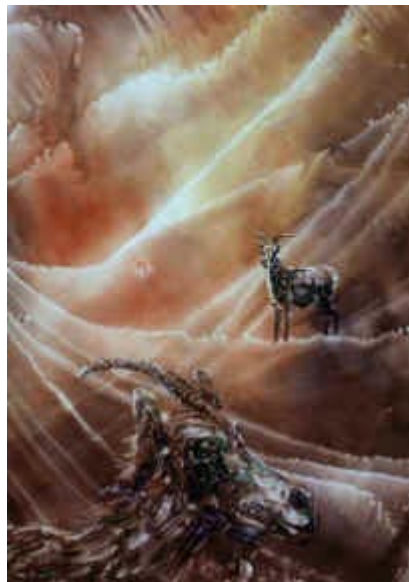
ONLY ONE

watercolor painting to the Members Critique. The preferred size of the watercolor painting submitted should be large, while the minimum size should be a half sheet.

Please note, unlike previous years, **NO FRAMED** art work will be accepted, however your painting must be matted. Just a reminder, to the audience: you don't have to agree with the critiques. Even if you don't plan to bring a painting, please plan on attending. You will learn a lot from listening to the individual critiques.

Our SURPRISE panel of knowledgeable artists will critique your paintings during this enjoyable meeting.

These critique artists have experience in teaching and exhibiting. Their artworks have been featured in many local and national exhibitions. You are in for a treat this evening.



Guess who created these paintings. Clue: they are all volunteers in AWA



AWA General Meeting

March 13, 2006 7:30 pm

UNITARIAN CHURCH

4027 E. Lincoln Drive, Paradise Valley

Church doors open at 7:00 p.m.

Fun Table Activities

(Handicap entrance on West side.)

AWA 2005-2006 Officers



Board Members

President

Nancy Schaller 480-945-0340

1st Vice President (Membership)

Colleen Dixon 480-917-8397

Co-Chair: John Peeke-Vout 623-551-9266

2nd Vice President (Exhibitions)

Sandra Camp 623-535-9004

Co-chair **Harold Raap 602-971-1496**

3rd Vice President (Programs)

Gayla Bonnell 602-482-7308

Recording Secretary

Diane Bykowski 602-482-1622

Corresp. Secretary (Newsletter)

Ellsy Bird 480-948-2649

Treasurer

Pat Beans 480-963-4802

Western Federation Society Delegate

Deloris Griffith 623-877-8281

Trish Mayberry alternate

Director at Large (National Show)

Diane Kent 602-938-3867

Director at Large (Juror workshops)

Teri McDarby 623-939-3956

Sherri McClendon 623-936-1661

Director at Large (Sat. Workshops)

Jan Eickhorst 480-551-4909

Susan Stowe 602-258-9232

Past President

Marsha Wright 623-561-0477

Committees

By-laws Council

Mickey Daniels 602-840-1388

Computer Corner (Web Site)

Jennie & Michael Johnson 602-942-3157

Honor Society

Norma Cox Miller 623-546-9489

Historian

Janice Bell 480-947-278

Publicity

Diane Hitt 480-802-7080

Scholarships/Special Events

Susan Lobert 602-996-5716

Social

Judith Delmonico-Roll 480-990-1359

Newsletter Chief Editor

Barbara Freedman 623-584-2867

Data Base

John Peeke-Vout 623-551-9266

Computer prospectus/Award certificates

Joy Horowitz 480-802-6695

AZ Art Alliance Rep

Harold Raap 602-971-1496

Overhead Mirror Set-up at Meetings

Alex Pekala 623-412-1866

Directory General Information

Bettye Aboud 602-971-7264

Arizona Watercolor Association 2005-2006 Calendar of Events



General Meetings & Board Meetings held at the Unitarian Church

4027 E. Lincoln Drive, Paradise Valley
General AWA meetings & Board meetings
AWA Saturday Workshops @ See below.

General Program Meetings

Mon. 7:30 p.m. - 9:30 p.m. Unitarian Church

September	12	Juror demo	<i>Eric Wiegardt</i>
October	10	WFWS slides & Honor Society info	
November	14	Juror demo	<i>Pat Dews</i> at Fountain Hills
December		No Meeting	
January	9	Demo artist	<i>Diane Kent</i>
February	13	Demo artist	<i>Sue Hunter</i>
March	13	Members critique	
April	10	Demo artist	<i>Ray Sol</i>
		<i>Vote in new officers & exhibition reception</i>	
May	8	No Meeting for general membership	

Saturday Workshops

9:00 a.m. - 3:00 p.m. Unitarian Church

1-day & Juror's Workshops

October	15	<i>Gayla Bonnell</i>
January	14	<i>Diane Kent</i>
February	18	<i>Sue Hunter</i>
March	18	<i>Darlene Goto</i>

Juror's Workshops

September 10, 2005	<i>Eric Weigardt</i> at North Baptist Church
November 16,17,18	<i>Pat Dews</i>
November 19 Sat.	<i>Pat Dews</i>
April 26,27,28, 2006	<i>Arne Westerman</i>
April 29, Sat.	<i>Arne Westerman</i>

Exhibitions

September 2- Oct.22, 2005	AWA National Show Chandler Art Center, Juror <i>Eric Wiegardt</i>
September 11	Awards Ceremony and Reception, National Show Reception from 2:00 - 4:00 Chandler Arts Center
October 31-Nov. 18	Fall Membership Show, Juror <i>Pat Dews</i>
November 14	5:30 - 7:00 p.m. Fall Awards and Reception
April 23, 2006	Spring Membership Show, Juror <i>Arne Westerman</i>
April 30, 2006	Spring Membership Show Reception

Board Meetings

Mondays, 4:30 p.m. - 6:00 p.m. Unitarian Church

Sept. 12 Board & Committees	Jan. 9, 06 Board & Committees
Oct. 10 Board & Committees	Feb. 13 Board & Committees
Nov. 10 Thurs. Board & Committees	Mar. 13 Board & Committees
Dec. NO MEETING	April 10 Board & Committees
	May 8 Board & Committees Retreat

WORKSHOP with guest Juror **Arne Westerman**



paintings by Arne Westerman



Workshop information:
Teri McDarby 623-939-3956
Sherri McClendon 623-936-1661

Create exciting figurative paintings more ambitiously and successfully

Incorporate new ideas on design and structure to build your best figurative paintings ever. Use my “no-fault” 3-stage process to build clear-cut values, strong compositions and good color development. Know before you even start the large painting that you’re on the right track and headed for a successful piece of work.

There will be a great deal of individual attention and demonstrations. Artists will learn to find and incorporate the basic structures used by famous artists. The workshop is open to artists with some painting experience all the way to working professionals. Lots of fun and plenty of great ideas to take home.

- One half day drawing and painting the nude and costumed figure
- Slide programs on design throughout the workshop
- Learn to design the cohesive, balanced rectangle with a decided center of interest and a path of movement through the painting
- Learn to make color work for you
- Learn to see shapes in abstract form, how to connect smaller shapes to make larger more interesting structures
- Examine the work of famous artists, get ideas you can use and see mistakes to avoid
- Learn how to arrange or grab “meaty” photographs which can result in successful designs
- Learn how to critique your own work

A chance to feel, eat, and breathe art for a week with fun people.

Arne Westerman is a member of the AWS, NWS and the Watercolor Societies of the Northwest and Oregon. He is listed in Who’s Who in American Art, has won many major awards in national juried shows including seven grand prizes. His paintings are in the permanent collections of ten American museums and his works have been featured in forty-two one-person shows. Selections of his art appear in six books published by North Light Books: *The Simple Secret to Better Painting*, *Splash I*, *Splash IV*, *The Best of Portrait Painting*, *Artist’s Guide to Materials and Techniques* and *Being an Artist*. *Paint Watercolors Filled With Life and Energy*, published by North Light, is authored by Arne Westerman. He has written a number of articles on watercolors.

Paintings by Westerman are also included in two books by Rockport Publishers, including *The Best of Watercolors*, and *The Best of Watercolor Figures*. He has also authored a satire on the art world entitled *How to Become A Famous Artist Through Pain and Suffering*.

Arne Westerman is a respected teacher and juror and conducts painting workshops throughout the world. He is represented in galleries in Portland, OR; Carmel and Burlingame, CA; Scottsdale AZ and Pittsburgh, PA. His studio is in Portland, Oregon.

ARIZONA ART ALLIANCE JURIED ARTISTS REVOLVING FINE ART EXHIBITION AVONDALE CITY HALL

The Exhibit: The Arizona Art Alliance and the West Valley Arts Council have come to an agreement with the City of Avondale, who will provide approx. 150 ft. of wall space in public access areas of their new City Hall building. AAA juried artists to show and sell their work revolving fine art exhibits throughout the year. The space can hold 30 to 45 pieces in each segment which can last from 7 to 10 weeks each. The art can be offered for sale or not. The artist keeps 100% of the sale price. However the piece must stay until the end of the exhibit.

The Jury: A six person panel of jurors, meeting throughout the year, will jury each artwork by viewing submitted photo entries on a piece by piece basis. Accepted artwork will be in the exhibit.

Requirements: All submissions must be original works of art. The artwork must have quality frame and matting materials. The AAA Show Director and/or the Avondale jury staff reserve the right to refuse any accepted artwork if the frame or mat is not in presentable condition or if the artwork does not match the initial photo submitted.

All artwork done on paper must be adequately framed, matted under glass and wired.

Because it is a public municipal venue, no nudes allowed.

Size limitations: image maximum: none. Big is good. Image minimum: 8 inches by 10 inches

To submit entries: Because the exhibit revolves throughout the year in several different segments, the artist may submit as many entries as they like as often as they like for the jury process. Submissions to be juried by photo must be sent by standard postal mail to the Show Director, Alan Arne 12810 N. Cave Creek Rd. #145, Phoenix, AZ 85022 – phone: (602) 788 6349 email: aaarne@cox.net . The artist must submit contact information by filling out a submission form provided by the AAA. The artist must submit one high quality 4 inch by 6 inch photo for each piece of artwork that they are entering to be juried. Please put your name, the name of the piece, the medium, the price and the size of the piece on the back of each photo. These photos will not be returned.

Jury Fee: There will be a non-refundable \$5.00 jury fee for each piece of artwork that is submitted for the jury process. A check or money order made out to the AAA must accompany all submissions. The artist will be notified by phone or email and given a date, time and directions to deliver the accepted piece to the Avondale City Hall. The artists will also be notified about the pick up date.

Exhibit dates: April 17th to June 2nd, 2006. All submissions for the next exhibit segment must be received by April 10th, 2006.

Questions, please feel free to contact the Show Director:
Alan Arne phone: (602) 788 6349 email: aaarne@cox.net.

AWA Website

www.watercolor.org

Watch our site for calendar news and show information. You may also view the Newsletter

Our WebSite Specialists

Jennie & Michael
Johnson:

602-942-3157

Send all Newsletter questions to
Barbara Freedman
bfreedma@cox.net

Ad Rates & Newsletter Policy

Please feel free to contribute articles or member news to the newsletter.

E-mail news items or ads to:

bfreedma@cox.net

Ad rates are as follows:
Full Page \$ **200** --7.5 x 10
Half Page \$ **75** -- 7.5 x 5
Quarter Page\$ **40** -- 3.5 x 5
Sixth Page\$ **20** -- 3.5 x 2.345

Smaller ads: \$5 for first 20 words and \$.10 per word over that.

Deadline is the 10th of the month before Pub date for Articles and Advertisements.

Questions? Call **Barbara, 623-584-2867**

Make checks payable to **AWA** and mail to AWA Newsletter Editor,

Barbara Freedman
14622 W. Arzon Way
Sun City West, AZ 85375



Congratulations to AWA members accepted into the WFWS 31st Exhibition hosted by Lubbock, Texas This show opens May 20, 2006.

- Carol Smith** Pike Place Peppers
- Barbara Freedman** House Hunt
- Janice Bell** In My Garden
- Norbert Baird** Out of Print
- Bonnie Ender** Chinese Red
- Deloris Griffith** Hidden
- Kathryn Tartaglia** Reflections in Lace
- Sidney Moxham** Corolla
- Nora Bigelow** KJB
- M. J. Oshier** Manaus/Amazon
- Martha L. Germano** Rose Quartz Quarry
- Sandra J. Camp** Flowers for Gabriella

Ten watercolor societies participate in WFWS, the following number of artists have been accepted into this 31st exhibition.

- AWA has 12 accepted artists
- CWS has 16 accepted artists
- NWS has 3 accepted artists
- NMWS has 12 accepted artists
- SDWS has 12 accepted artists
- SAWG has 2 accepted artists
- SWS has 13 accepted artists
- UWS has 2 accepted artists
- WAS-H has 5 accepted artists
- WTWS has 2 accepted artists

Members in the News

Barbara Freedman, NWS has 2 paintings accepted into National Shows in Texas. One in Lubbock for the WFWS exhibit in May and the other in the Society of Watercolor Artists, Fort Worth also opening in May, 2006.

Deloris Griffith has been accepted into the Western Colorado National Exhibition that was juried by Jean Grastorf.

Betty Braig & Joanne Lowney will have a two person show "Horizons, Layers & Illusions" at East Side Art Gallery 9919East Apache Trail, Mesa You are invited to the opening Sat, March 11, 4:00 to 7:00 pm Gallery phone 480-986-5450

Carolyn Hallstrom received an "Award of Excellence" at the January "2006 Anthem Festival of Fine Art".

Linda Pullinsi, is currently showing at the Floor Studio, Inc. in Phoenix on the NE corner of 1st street & Roosevelt. The show, titled,

"LOVE DIVINE, Iris & Memories of Mom"

includes over 40 of Linda's paintings as well as the work of her Free Arts teen mom mentor group as they reflect on what motherhood means to them. The show hangs through May including First Fridays and Art Detour.

Linda has also created an instructional watercolor DVD for beginners which can be purchased at the show or at:

www.lindapullinsi.com

FOR SALE

ALTO Mat Cutter
extra delux mat cutter
\$45.00 call: 480-917-8397

ALTO DELUX Mat Cutter
incl. oval mat cutter,
\$95.00 call: 480-917-8397

Balance Sheet

January, 2006

ASSETS

Current Assets	
Checking/Savings	
A G Edwards	
A G E Investment	13,102.64
Jochumsen Bequest	6,030.14
Oman Bequest	7,209.95
WFWS '05	15,000.00
Total A G Edwards	41,342.73
checking accounts	
Bank One	12,913.38
Total checking accounts	18,665.35
Total Checking/Savings	54,256.11
Total Current Assets	54,256.11
TOTAL ASSETS	54,256.11

LIABILITIES & EQUITY

Liabilities	
Equity	
Opening Bal Equity	56,655.40
Net Income	-2,399.29
Total Equity	54,256.11

TOTAL LIABILITIES & EQUITY

54,256.11

continued from p. 4

Darlene Goto's Workshop will review basic design principles such as balance, dominance, focus and breaking up the space on the picture plane.. The students' paintings may start with a splash. There will be a demo and two critiques. Darleen welcomes artists and students at all levels to join an exciting journey of watercolor discovery!

The Workshop is \$35 for AWA members and \$40 for nonmembers. Call Sue Stowe at 602-258-9232 for information on registering.



art by *Judy Delmonico-Roll*



art by *Diane Kent*

Memorial

Francis Cole a long time active member of AWA died at 95 years of age in January. You may send cards to her daughter, Bette at 1745 Grevelia Street, Apt. 7, South Pasadena, CA 91030.

Message from the president Nancy Schaller

Think of the month of March as a reminder for you to march, run or walk to the telephone right now! AWA needs you. There are several positions open on the committees and Executive Board. Sue Hunter, Nominating Committee chairperson, would love to hear from you.

Thank you, Bonnie Allen, for reaching out to the call for volunteers to help AZ Art Alliance provide instructors at the Eagle Point School. If there are other AWA members who have volunteered to help AAA, please let me know. Remember, AAA provides the transportation and only asks for one day each month.

Call Harold Raap AAA Rep at 602-971-1496

Here are two special AWA members who presently give their time and energy for your benefit:

Judy Delmonico-Roll has been a member for less than three years. She gives me credit for urging her to join AWA. Judy especially enjoys the demos at the monthly meetings, watching accomplished artists at work. She feels that serving as Social Committee chairperson, this year, has afforded her the opportunity to meet and interact with a lot of members that she may not have known otherwise.

This is Judy's thoughtful message to all of us: (Quote), "Volunteering really gives one a feeling of belonging to a group. Additionally, the more people who volunteer in any organization, the better that organization functions. This benefits each of its members individually. So, by volunteering, we not only help AWA, but ourselves, as well!" (Unquote).

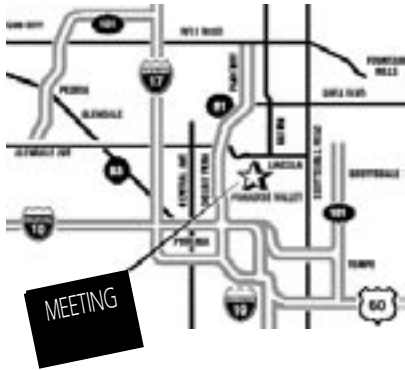
Diane Kent is a Director at Large, who so expertly chaired the 2005 National Show, last Fall. Diane was also Honor Society Chairperson for two years. She appreciates being a part of AWA and thinks that the Jurors selected for all our Exhibitions, attracts National attention to our organization.

Diane is a signature member of the National Watercolor Society, Watercolor West and Western Federation Watercolor Society. She is listed as a Royal Scorpion Honor Society member in AWA, and will soon be awarded her AWA Signature certificate.

Worthy of repeating,

"The more people who volunteer in any organization, the better that organization functions.

Early Notice: The scheduled May Program Meeting has been canceled. The date will be used for incoming and outgoing Executive Board members' Retreat.



MARCH 13TH meeting at the
UNITARIAN CHURCH

MARCH 2006 NEWSLETTER

MARCH FUN TABLE

The March Fun table will feature some Arches Bright White paper . Some Maimeri Brera acrylic pigments from Bill & Richard Mille at Mcleod Distribution!?!?

Be sure to arrive on time to experiment with these materials. Judy Lawson will be available for guidance and suggestions on how best to use these tools.

Any water soluble media is acceptable in our AWA membership exhibitions. That includes, transparent watercolors, opaque watercolors, acrylics,gouache, createx pure pigments, and egg tempera. All pigments must be used on a paper support. See you at the demo fun table.



Paintings by AWA Web Masters
Michael and Jennie Johnson

